

Patient Information

Respiratory

The lung cancer nurse team

To receive the news that you, a family member or a friend has been diagnosed with lung cancer can be a devastating experience. The Macmillan lung cancer nurse specialists offer support to patients and their families during this time.

Advanced Nurse Practitioner: Lindsey Fitzpatrick 024 7696 5505

Clinical Nurse Specialists: Fiona Atkins, Helen Gardner,
Nicola Jackson, Sarah Newcombe

Navigator: Elaine Edwards

Secretary: Wendy Ashton

Telephone: 024 7696 5505 Monday to Friday, 8am to 5pm

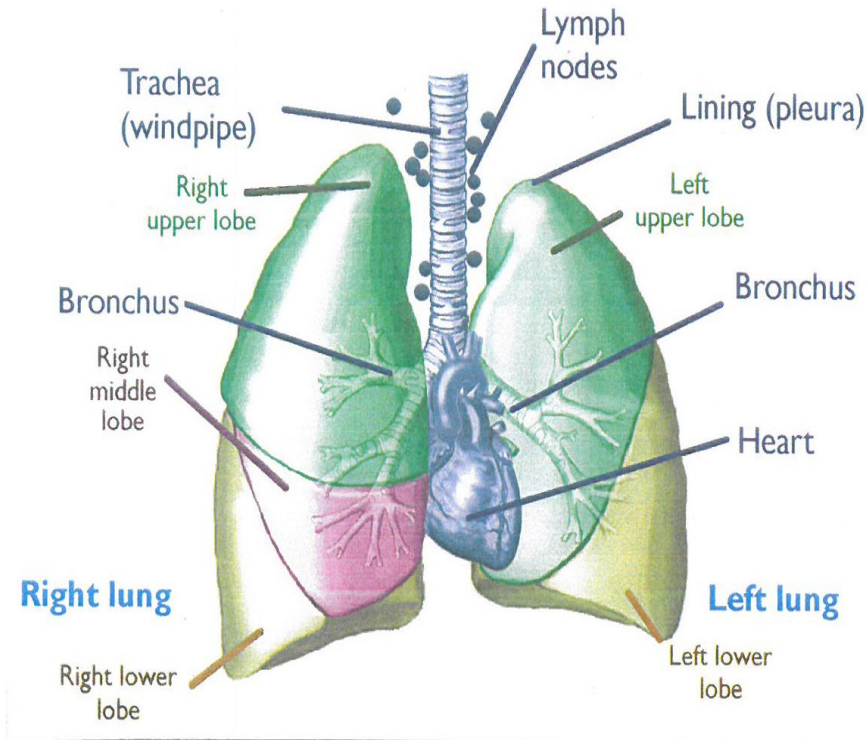
Oncology Nurse Specialist: Jamella Padovan 024 7696 4832

Thoracic Nurse Specialist: Leanne Dee 024 7696 5804

Our navigator can provide support for you, your family, and your carers throughout your cancer journey. They can assist you and refer you to local support services.



Patient Information



Images licensed under Roy Castle lung cancer foundation

Diagnosis.....

Type of cancer

Non-small cell

Small cell

Mesothelioma

Other

Treatment plan.....

Key Worker.....

Patient Information

Surgery: You will receive written lung surgery information before your clinic appointment with the surgeon. During this appointment, you will have the opportunity to discuss the procedure in more detail. At this clinic, you will meet thoracic specialist nurse, Leanne Dee.

Oncological Treatments: These may include radiotherapy, chemotherapy, immunotherapy, targeted therapy, or a combination of these. You will be provided with more information by your oncologist (cancer treating specialist) once the treatment is determined. At this clinic, you will also meet your oncology clinical nurse specialist.

Palliative Care: This focuses on managing symptoms to improve your quality of life.

Holistic needs assessment (HNA)

Following your diagnosis of lung cancer, you will be scheduled for a telephone consultation with one of the lung nurses. During this consultation, you can discuss any concerns you might have. You will receive a holistic needs checklist through the post before your appointment to help you identify any issues. This process is called a Holistic needs assessment (HNA).

The HNA can help you identify any concerns you may have after your lung cancer diagnosis. These concerns may be physical, emotional, practical, financial, or spiritual.

Your lung nurse will provide support, guidance and referrals to other agencies as needed. Please use the information booklet to identify the support available, which you can access at any point, now or in the future.

The Trust has access to interpreting and translation services. If you need this information in another language or format, please contact 024 7696 5505 and we will do our best to meet your needs.

The Trust operates a smoke free policy.

Patient Information

Did we get it right?

We would like you to tell us what you think about our services. This helps us make further improvements and recognise members of staff who provide a good service.

Have your say. Scan the QR code or visit:

www.uhcw.nhs.uk/feedback



Document History

Department:	Respiratory
Contact:	25055
Updated:	August 2024
Review:	August 2026
Version:	13.1
Reference:	HIC/LFT/502/07