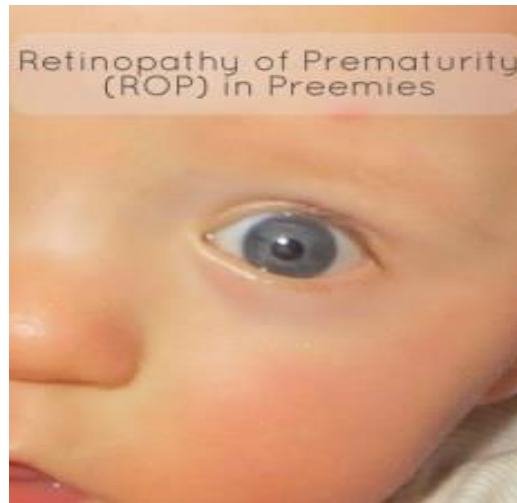


Orthoptic Department

Orthoptic follow up after Retinopathy of Prematurity (ROP) Screening



Your child has completed his/her Retinopathy of Prematurity (ROP) screening. You will be invited by the Orthoptist to attend an appointment for a visual assessment of your child's eyes when your child is 3½ years old.

The orthoptist will test your child's vision and check for the presence of a squint. Research has shown that premature babies have a higher risk of developing a squint or needing glasses than babies born at term.

It is very important for your child to have their eyes checked as this is the best time to detect and treat any problems.



Patient Information

Things to look out for:

- Your child doesn't fix and follow objects;
- Your child does not return a smile when you smile at them;
- Your child doesn't reach out or grab but feels for a toy near to them;
- Your child holds books/toys very close to eyes;
- Your child has a squint (one eye that turns).

If you notice any of the above, please contact your health visitor as soon as possible so that you can be referred to one of our Orthoptic community clinics for your child to be assessed. Our community clinics are held at:

- City Of Coventry Health Centre - Coventry
- Willenhall Primary Care Centre - Coventry
- Tile Hill Health Centre- Coventry
- Wood End Health Centre - Coventry
- Atherstone Early Years Centre - Atherstone
- Riversley Park Centre – Nuneaton
- Bedworth Health Centre – Bedworth
- St Cross Hospital – Rugby

Types of squint that may be seen:

Convergent squint (eye turning inwards)



Patient Information

Divergent squint (eye turning outwards)



Pseudo-squint (both eyes are straight)

In these cases the eyes are functioning normally but the child may have a broad nasal bridge or excess skin covering the corners of the eyes which may look as if the eye is turning inwards when it is not.



Routine Vision Screening

If your child passes the vision screening at 3½ years, they will be routinely screened during their reception year at school.

Further Information

If you have any further questions or concerns about your child's eyes or vision, please contact the Orthoptic Department.

Contact Details:

Orthoptic Department

UHCW NHS Trust

Clifford Bridge Road

Coventry

CV2 2DX

Tel: 02476 966520

Patient Information

The Trust has access to interpreting and translation services. If you need this information in another language or format please contact 024 7696 6520 and we will do our best to meet your needs.

The Trust operates a smoke free policy.

Document History

Department:	Orthoptics
Contact:	02476966520
Updated:	January 2020
Review:	January 2022
Version:	1.1
Reference:	HIC/LFT/2178/17

References:

Picture 1: <http://www.preemiebabies101.com/see-clearly-now-retinopathy-of-prematurity/>

Picture 2: <http://www.squintdoctor.co.uk/adult-squint-problems.htm>

Picture 3: <http://www.squintdoctor.co.uk/adult-squint-problems.htm>

Picture 4: http://www.leczeniezeza.pl/slownik/zez_pozorny.html.