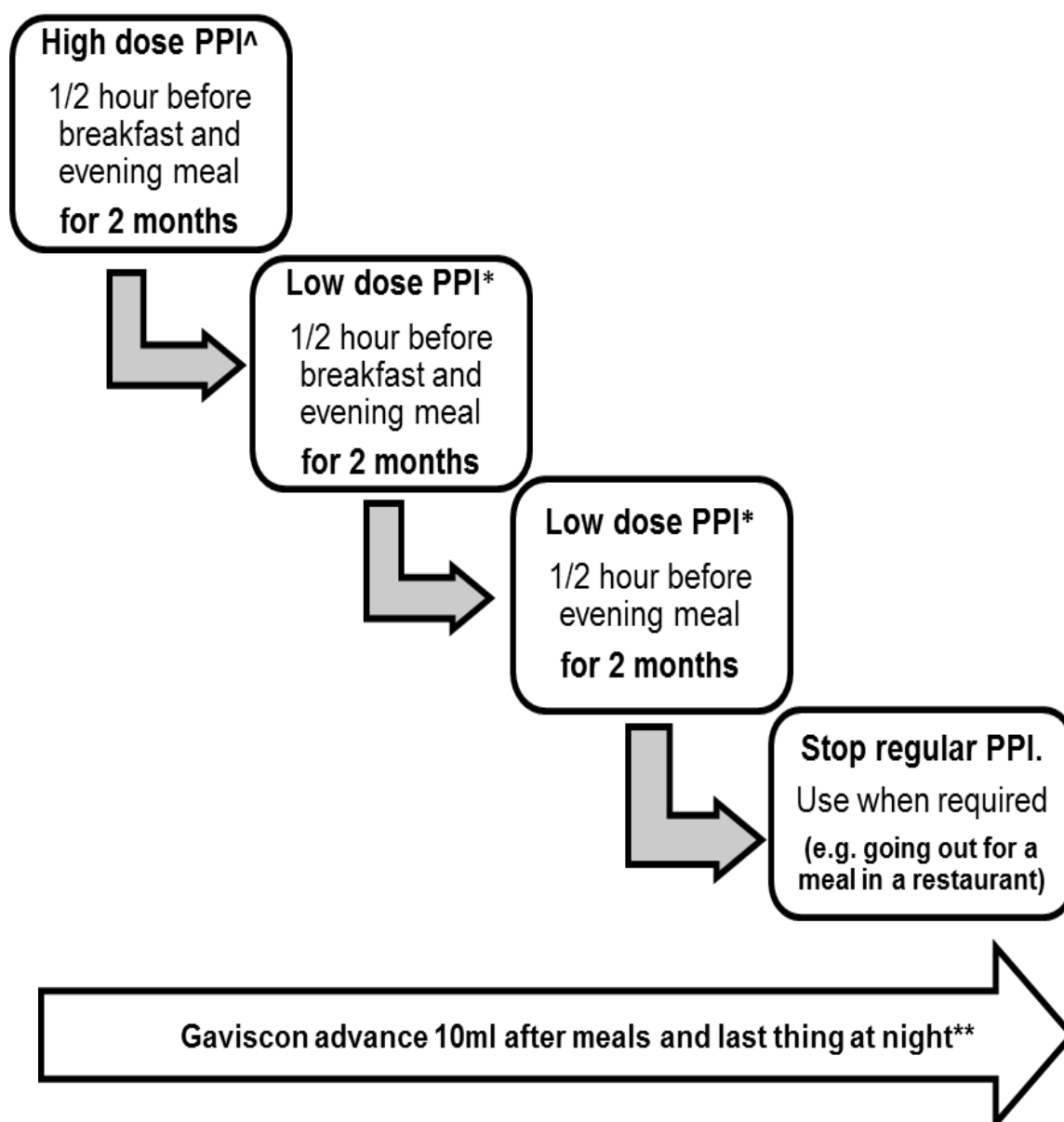


ENT Department

Step-down plan for laryngopharyngeal (silent) reflux medications



Patient Information

^Proton pump inhibitor (PPI): Pantoprazole 40mg/Lansoprazole 30mg/Omeprazole 40mg/Esomeprazole 40mg/Rabeprazole 20mg

* Half of above dose

** Continue Gaviscon advance at least for 2 weeks after stopping PPI to reduce the chance of rebound symptoms; subsequently, may be taken at night on a long-term basis

Further Information

If you have any questions or comments about this information sheet please contact the team on: 024 7696 5684

The Trust has access to interpreting and translation services. If you need this information in another language or format, please contact us on 024 7696 5684 and we will do our best to meet your needs.

The Trust operates a smoke free policy

Document History

Department:	ENT
Contact:	02476965684
Updated:	August 2020
Review:	August 2022
Version:	1.1
Reference:	HIC/LFT/2296/18